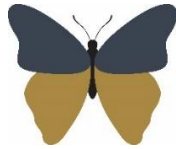


Welshampton Church of England Primary School



**Growing together
in strength, love and wisdom, we shine.**

**Newsletter
Friday 20th June 2025**

Message from the Head

What a morning we had on the track today with another Welshampton Sports Day Spectacular! It was fantastic to welcome so many of you to support the children and we hope you had a great time watching the children compete against each other but also support each other.

Big thank you as always to the Welshampton Friends for providing such superb catering and organising and running the raffle.

Also thank you to the staff which put so much work into making this morning run so smoothly to ensure everyone has a great time.

Finally, thank you to you, the parents, who support us so well, cheer on the children and also get involved yourselves... not a hair clip in sight – almost! It was lovely to hear so many positive comments.



... and huge congratulations to our winning house,
Brimstone!



Writing Moderation Success

This week we welcomed Shropshire Local Authority to Welshampton after being selected for Year 6 Writing Moderation. This is when the Local Authority check that Year 6 children are being accurately assessed and supported in their writing.

It was wonderful – but not surprising – to hear that our UKS2 team of Miss Jones, Miss Kerr and Mrs Curzon were highly praised and congratulated on how they support and assess the writing of our Year 6 children. Well done all!

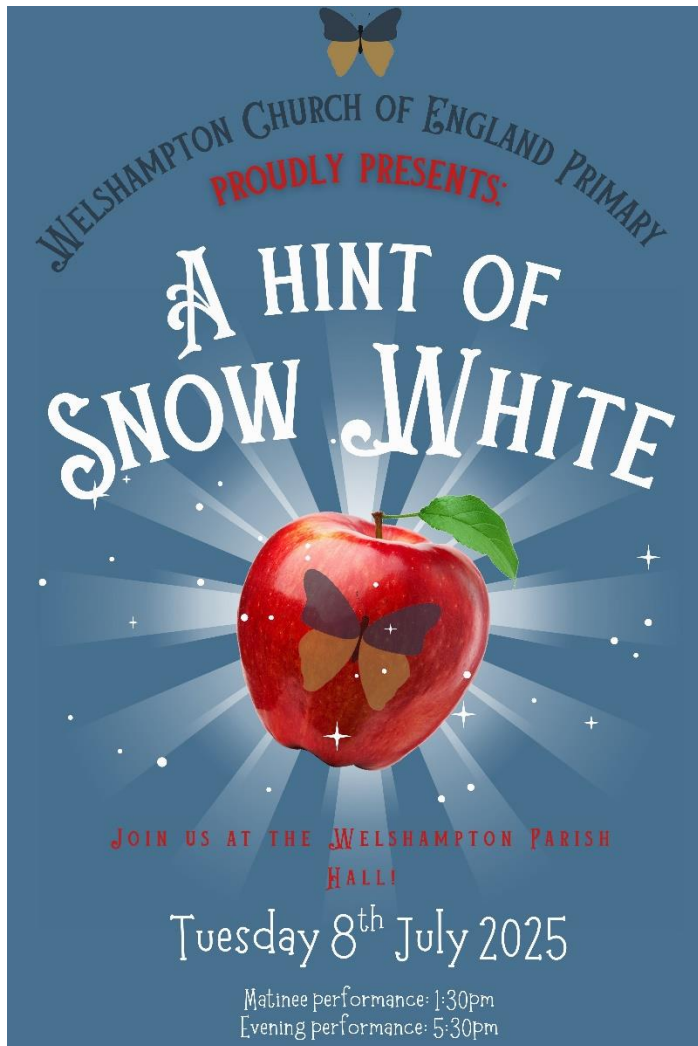
Assessment Week

Next week is our Summer Term Assessment Week where the majority of children will complete assessments so we can measure academic progress. We are particularly excited as we will trialling electronic assessments in Year 3 and Year 4.

Executive Headteacher: Mr Ben Crompton

Address: Welshampton Church of England Primary School, Welshampton, Shrewsbury SY12 0PG **Telephone:** 01948710325
Twitter: @WelshamptonSch **Email:** admin@welshampton.shropshire.sch.uk **Website:** www.welshamptonceprimary.co.uk

Event of the Year!



We will start by allowing 4 tickets per family per performance and then issue spares when we know how many we have left. We will start selling them at drop off and collection times from Monday 23rd June-cash only please!

School Uniform Orders

School uniform for September back to school needs to be ordered by 8th August 2025. Orders after this date may not be ready in time for back to school. There are several ways to order uniform

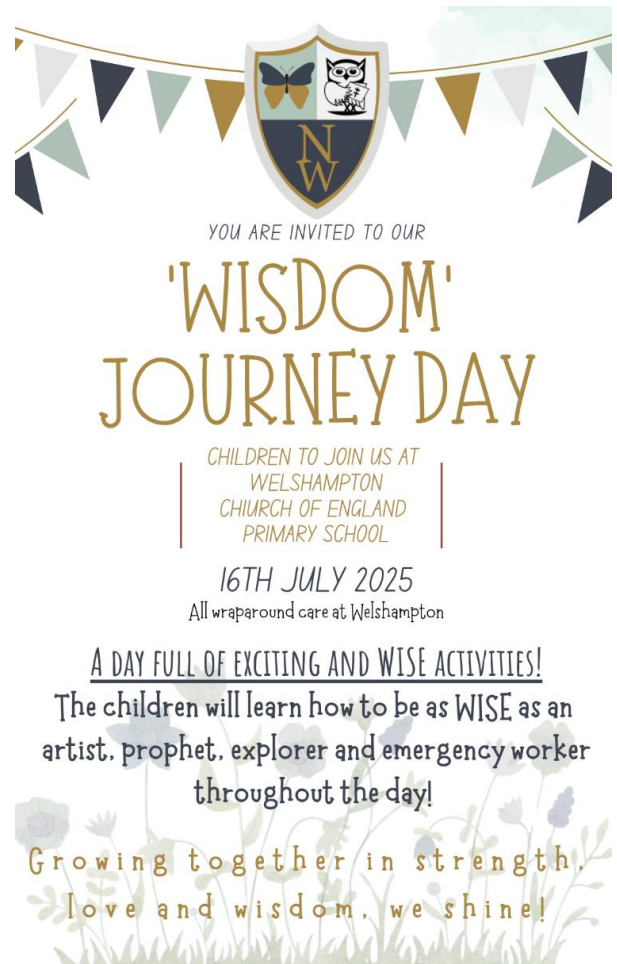
SHOP - SHREWSBURY
Opening times
Monday – Friday 9-5pm
Saturday 10-4pm

Extended summer holiday opening hours please see the website.

www.schoolshopdirect.co.uk
Info@schoolshopdirect.co.uk
01743 440 449

Executive Headteacher: Mr Ben Crompton

Address: Welshampton Church of England Primary School, Welshampton, Shrewsbury SY12 0PG **Telephone:** 01948710325
Twitter: @WelshamptonSch **Email:** admin@welshampton.shropshire.sch.uk **Website:** www.welshamptonceprimary.co.uk



Parent Governor Vacancy

In September, we will have a vacancy on the Newhampton Federation Governing Body for an elected Parent Governor. If you are interested in supporting the headteacher and senior leadership team to drive the strategic development of Newtown and Welshampton Schools, please contact our Chair of Governors, Matt Topples, via email. chairgov@newhampton.shropshire.sch.uk

Shrewsbury Town Foundation

The Shrewsbury Town Foundation would like to invite you to register for our Summer Holiday Clubs. These will run weekdays from 21st July - 29th August for 6 weeks.

We currently have a 5% DISCOUNT for siblings.

This discount will stack with our multi - day DISCOUNT, meaning you can secure the full week for £81!

Please click the link to book on: <https://foundationstfc.hivelink.co.uk/286/>



Shining Stars of The Week!



Outside Achievements

Due to Sports Day – these will be shared next week...

Weekly Attendance

Attend Today, Achieve Tomorrow...

Willow Class – 97% ★★

Beech Class- 95% ★

Oak Class- 96% ★★★

Weekly average: 96%

Have a wonderful weekend!

Yours sincerely,

Mr Crompton.

Key School Dates

July

8th July

16th July

18th July

A Hint of Snow White
Whole School Production
1:30pm & 5:30pm
Newhampton Journey Day
At Welshampton
Leavers Service
Parents Welcome
9:30am

Executive Headteacher: Mr Ben Crompton

Address: Welshampton Church of England Primary School, Welshampton, Shrewsbury SY12 0PG **Telephone:** 01948710325
Twitter: @WelshamptonSch **Email:** admin@welshampton.shropshire.sch.uk **Website:** www.welshamptonceprimary.co.uk