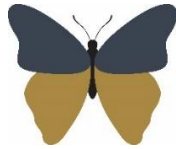


Welshampton Church of England Primary School



**Growing together
in strength, love and wisdom, we shine.**

**Newsletter
Monday 5th April 2025**

Message from the Head

Happy Bank Holiday everyone – I hope you are enjoying an extra day to your weekend!

It was wonderful to welcome all the children and staff back to school last week for the start of the summer term in the sun!

The school was awash with positivity and enthusiasm from all as the two-week Easter break had clearly refreshed, rejuvenated and recharged all.

This is a short half term – there are only three weeks left – but it is packed full including SATs Week, VE Day Celebrations and secondary school transition days!

Our first event will be VE Day on Thursday and we have some special activities and a lunch planned. Children are invited to come to school wearing blue, white and red to make the day extra special!

On Friday we will also be marking 175 years since the foundation stone of Welshampton School was laid. There are further celebrations marking the 175th anniversary of the school to come later in the year, so watch this space!

We will also be hosting weekly Stay & Play sessions for prospective children and parents so please look out for those events and share with anyone you know and encourage them to come and spend time at our wonderful school.

We also have places in all other year groups and would love to welcome more children to our school so please spread the word.



Wraparound Care at Welshampton

As was communicated before Easter, we have been reviewing the wraparound care provision at Welshampton and there are a few changes in the hope and expectation that our wraparound care will be further enhanced and made more attractive and purposeful for children. Below I have outlined how Sunrise Club and Sunset Club will now operate.

Sunrise Club

This provision will run from 7:30am to 8:40am every morning with Mrs Edge and Miss Edge. Children are invited to arrive at any point from 7:30am and breakfast, for example, a selection of cereal, fruit and toast, will be served as part of the fee of £4. Please note that breakfast won't be served to children arriving after 8:20am as staff need time to wash up and clean away before the school day starts.

Sunset Club

This provision will be split into two sessions - from 3:15pm to 4:30pm and from 4:30pm to 5:30pm.

During the first session (3:15pm to 4:30pm) we will run an after-school club like we currently do. This will be bookable on a casual basis via the School Money App and each night will have a different theme. For example, Young Engineers or Art. Children will be supported by our Teaching Assistants in accessing these activities. Children can be collected from this at the convenience of the parent up to 4:30pm.

From 4:30pm to 5:30pm, we will continue to offer wraparound care, and a snack and drink will be provided. Children may be collected at any point.

Club Numbers

Due to staffing ratios, there will be a cap on number of children per club therefore places will be allocated on a first come, first served basis, but we have increased our staffing levels, so we fully expect to be able to meet demand. If, however, you are unable to book online, it is because the club is full and legally we are unable to take additional children.

Executive Headteacher: Mr Ben Crompton

Address: Welshampton Church of England Primary School, Welshampton, Shrewsbury SY12 0PG **Telephone:** 01948710325
Twitter: @WelshamptonSch **Email:** admin@welshampton.shropshire.sch.uk **Website:** www.welshamptonceprimary.co.uk

Cost

Despite increased costs for everything, we are really pleased to be able to freeze the cost of our wraparound care and it will remain at £4 per child per session. However, unfortunately, we will no longer be able to offer sibling discount.

Booking

All clubs can be booked on the School Money App. Please book and pay in advance where possible to save our admin team having to chase up payments at a later date. If you require wraparound provision at late notice, please ring the school to book in but please be aware if our clubs are full, we will be unable to accommodate requests.

Summer 1 Timetable

	Sunrise Club £4	Sunset Club £4	Sunset Club £4
	7:30am to 8:40am	3:15pm to 4:30pm	4:30pm to 5:30pm
Mon	Breakfast	Muddy Monday	Chill Out & Snack
Tue	Breakfast	Young Engineers	Chill Out & Snack
Wed	Breakfast	Tennis	Art
Thu	Breakfast	Cookery	Chill Out & Snack
Fri	Breakfast	Track & Field Athletics	Chill Out & Snack

If you have any ideas, and feel free to think 'outside the box', please do get in touch and make suggestions.

School Lunches

Summer term menus and information has been shared and is attached at the bottom of this newsletter. The school lunches work on a 3 week rolling programme to give the children a variety of options to enjoy.

Shrewsbury Town Foundation

The Shrewsbury Town Foundation would like to invite you to register for our May Half Term Club. They currently have an EARLY BIRD DISCOUNT meaning you can secure 10% off when you book before Friday 9th May.

This discount will stack with the multi-day discount meaning you can secure the full week for less than £60!

Please click the link to book on: <https://foundationstfc.hivelink.co.uk/286/>



Pen Licence

Congratulations to Luke Di for gaining her pen licence



Shining Stars of the Week

Strength

'Be strong and courageous! Do not be afraid or discouraged.'
Joshua 1:9

Willow Class

Poppy Dar and Florence for showing great strength in their first week at Welshampton

Beech Class

Imy for showing super strength with her descriptive writing

Oak Class

Rosie for her amazing determination in Maths this week



Outside Achievements

Theo L for achieving his Grade 2 certificate in Piano

Maisie on gaining IGA 7 & 8 proficiency award in Gymnastics

Zach on gaining a medal at a Rugby Tournament

Keira on gaining her Litter Picking Badge in Brownies

Executive Headteacher: Mr Ben Crompton

Address: Welshampton Church of England Primary School, Welshampton, Shrewsbury SY12 0PG **Telephone:** 01948710325
Twitter: @WelshamptonSch **Email:** admin@welshampton.shropshire.sch.uk **Website:** www.welshamptonceprimary.co.uk

Attend Today, Achieve Tomorrow...

Willow Class – 99% ★★★★★

Beech Class- 95% ★★

Oak Class- 98% ★★

Weekly average: 97%



Key School Dates

May

8th May
12th – 15th May

23rd May

VE Day
Year 6 SATs Week

Break up for half term

June

2nd June
8th – 13th June

20th June

Return to school
Phonics Screening Check
Year 4 Multiplication

Sports Day from 9:30am

We look forward to welcoming you all back to school tomorrow!

Yours sincerely,
Mr Crompton.



WEEK 1



	MONDAY	TUESDAY	WEDNESDAY	THURSDAY	FRIDAY		
SAMMY SWEETCORN SAYS... 'Enjoy your lunch!' 	OPTION 1	Fish Selection	Beef Bolognese	Roast Gammon & Gravy	Chicken Tikka Wrap	PIZZA PARTY A selection of pizza with various toppings	
	OPTION 2	Enchiladas (v)	Vegetarian Sausage Roll (v)	Cheese & Potato Pie (v)	Quorn Dippers (v)		
	JACKET POTATO BAR	Jacket Potato with Tuna	Jacket Potato with Cheese & Beans (v)	Jacket Potato with Cheese (v)	Jacket Potato with Cheese & Beans (v)		Jacket with Cheese & Coleslaw (v)
	CARBS	Potato Wedges	Pasta or Potato Crunchies	Mashed & Roast Potatoes	Diced Potatoes		Chips
	PUDDING	Lemon & Orange Drizzle Cake	Australian Crunch	Cornflake Cake	Toffee Apple Crumble & Custard		Fruity Friday A selection of fruit based desserts



ALL SERVED WITH...
A choice of two vegetables, fresh fruit & fruit yoghurts
Bob Snail fruit rolls & strips or ice cream & sorbets



SHIRE | FRESH |
services | dining |

Executive Headteacher: Mr Ben Crompton

Address: Welshampton Church of England Primary School, Welshampton, Shrewsbury SY12 0PG **Telephone:** 01948710325
Twitter: @WelshamptonSch **Email:** admin@welshampton.shropshire.sch.uk **Website:** www.welshamptonceprimary.co.uk

WEEK 2



MONDAY

TUESDAY

WEDNESDAY

THURSDAY

FRIDAY

SAMMY SWEETCORN SAYS...

'Enjoy your lunch!'



OPTION 1

OPTION 2

JACKET POTATO BAR

CARBS

PUDDING

All Day Breakfast

Mac 'n' Cheese (v)

Roast Chicken Gravy & Stuffing

Chicken Tikka Masala

PIZZA PARTY
A selection of pizza with various toppings

All Day Veggie Breakfast (v)

Fish Finger Bap

Quorn Balls Gravy & Stuffing (v)

Country Veg Bake (v)

Jacket Potato with Tuna

Jacket Potato with Cheese & Beans (v)

Jacket Potato with Cheese (v)

Jacket Potato with Cheese & Beans (v)

Jacket with Cheese & Coleslaw (v)

Hash Browns

Potato Wedges

Mashed & Roast Potatoes

Rice

Chips

Banana Cake & Custard

Strawberry Mousse or Shortbread Selection

Waffles with strawberries & toffee sauce

Raspberry & Apple Cake

Fruity Friday
A selection of fruit based desserts



ALL SERVED WITH...

A choice of two vegetables, fresh fruit & fruit yoghurts
Bob Snail fruit rolls & strips or ice cream & sorbets



SHIRE services | FRESH dining

WEEK 3



MONDAY

TUESDAY

WEDNESDAY

THURSDAY

FRIDAY

SAMMY SWEETCORN SAYS...

'Enjoy your lunch!'



OPTION 1

OPTION 2

JACKET POTATO BAR

CARBS

PUDDING

Katsu Chicken Steak

Chicken Taco

Roast Beef Gravy & Yorkshire Pudding

Meatballs in Tomato Sauce

PIZZA PARTY
A selection of pizza with various toppings

Quorn Ball Sub (v)

French Bread Pizza (v)

Vegetarian Sausage, Gravy & Yorkshire Pudding (v)

Katsu Quorn Dippers (v)

Jacket Potato with Tuna

Jacket Potato with Cheese & Beans (v)

Jacket Potato with Cheese (v)

Jacket Potato with Cheese & Beans (v)

Jacket with Cheese & Coleslaw (v)

Rice or Diced Potatoes

Potato Wedges

Mashed & Roast Potatoes

Diced Potatoes or Pasta

Chips

Blueberry Pudding

Cookie Selection

Vanilla Iced Sponge

Chocolate & Pear Cake

Fruity Friday
A selection of fruit based desserts



ALL SERVED WITH...

A choice of two vegetables, fresh fruit & fruit yoghurts
Bob Snail fruit rolls & strips or ice cream & sorbets



SHIRE services | FRESH dining