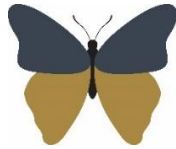


# Welshampton Church of England Primary School



**Growing together  
in strength, love and wisdom, we shine.**

**Newsletter  
Friday 28<sup>th</sup> February 2025**

---

## Message from the Head

I trust you all had a good half term break. It has been a busy start to the half term with children heading out of school on three separate occasions this week.

Our Reception children thoroughly enjoyed a day at Attingham Park yesterday. The children visited the gardens where they saw some beautiful flowers, completed a mile walk, learnt to use a map and had a tour of the grand house. It was a lovely experience for all and took advantage of the school's new National Trust card which enables free entry to such properties and gardens.



## Year 1 & 2 Indoor Athletics

I had the pleasure of transporting and supporting a group of children from KS1 to Criftins this week for an indoor athletics event. The children took part in a range of activities including long jump, javelin and running races. All children competed wonderfully and did the school proud.



## Year 5 & 6 Football

On Thursday our Year 5 & 6 football team travelled over to Oswestry School to compete in a large competition involving many local schools.


Our team performed brilliantly against a number of larger schools but the team overcame the odds and reached the semi-finals with a mixture of skill, determination and spirit. Well done to all for a fantastic achievement.

**Executive Headteacher:** Mr Ben Crompton

**Address:** Welshampton Church of England Primary School, Welshampton, Shrewsbury SY12 0PG **Telephone:** 01948710325  
**Twitter:** @WelshamptonSch **Email:** admin@welshampton.shropshire.sch.uk **Website:** [www.welshamptonceprimary.co.uk](http://www.welshamptonceprimary.co.uk)

## World Book Day

A reminder that children are invited to attend school dressed as their favourite book character next Thursday.



**WORLD BOOK DAY**  
**2025**  
Thursday 6th March

"Books train your imagination to think big"  
Taylor Swift

Children - and staff - are invited to come to school dressed as a character from a book of their choice

There will also be a very special menu available to the children for World Book Day:



**WORLD BOOK DAY**  
A Celebration of David Walliams Books

**MENU**

Burt's Ratburger  
or Bad Dad's BBQ  
Veggie Hot Dog (v)

**SERVED WITH...**  
Mega Monster Wedges  
Gangsta Granny Greens  
Mr Stink's Sweetcorn

**FOLLOWED BY...**  
Billionaire Boy  
Shortbread  
Awful Auntie's Apple  
& Grape Pots

SHIRE FRESH  
services | dining  
www.shireservices.co.uk

## Federation Faith Works Day

We are excited to be holding, the 'Federation Faith Works Day'. This special day will be led by the Cellar Church team alongside their American friends, and will take place at Newtown on 11<sup>th</sup> March.

The children will have the opportunity to enjoy a variety of stories and prayers, designed to enrich their understanding of the Christian faith and the vision of our schools.

We will be transporting the children to Newtown by bus, departing from school promptly at 8.50 a.m. Therefore, I kindly request that you ensure your child arrives at school on time. We will return by the end of the school day and wrap-around care will not be affected. Should your child require a hot dinner on that day, these can be ordered as usual.

Please remember to send your child with a labelled water bottle to keep them hydrated throughout the day.

This promises to be a fun-filled event, providing numerous opportunities for learning and building new friendships.



FRIENDS OF WELSHAMPTON SCHOOL  
**FIELD Spring Clean**  
SATURDAY 22ND MARCH 2025

Our fabulous school field is in need of a tidy up and friends have been asked to lend a hand to make it summer term ready!

So dust off your gardening tools and come with the kids for some famous hot chocolate and marshmallows

### Attend Today, Achieve Tomorrow...

Willow Class - 99% ★★★★★  
Beech Class - 98% ★★★  
Oak Class - 96% ★

Weekly average: 98%

**Executive Headteacher:** Mr Ben Crompton

**Address:** Welshampton Church of England Primary School, Welshampton, Shrewsbury SY12 0PG **Telephone:** 01948710325  
**Twitter:** @WelshamptonSch **Email:** admin@welshampton.shropshire.sch.uk **Website:** [www.welshamptonceprimary.co.uk](http://www.welshamptonceprimary.co.uk)

## Shining Stars of the Week

### Willow Class

All of Nursery and Reception for showing love, strength and wisdom on their Trip to Attingham Park

### Beech Class

Evie for great participation in class this week

### Oak Class

Robin for showing determination whilst completing his RE work

### Class Dojo Champions

Willow Class

Bridgette, George and Poppy

Beech Class

Albie, Bella and Kaden

Oak Class

Robin, Rosie and Connie

## Outside Achievements

Maisie on gaining her 10 metres and 15 metres swimming badges.

Poppy on gaining a badge for floating on her front in swimming.

Have a wonderful weekend!

Yours sincerely,  
Mr Crompton.



## Key School Dates

### March

13<sup>th</sup> – 14<sup>th</sup> March

Year 3 & 4 Residential Trip  
Conover

22<sup>nd</sup> March

Field Spring Clean

28<sup>th</sup> March

Mother's Day Service

2:15pm

All Welcome

### April

2<sup>nd</sup> April

Year 6 London Trip

11<sup>th</sup> April

Easter Service

9:15am at church

Parents welcome

### May

12<sup>th</sup> – 15<sup>th</sup> May

Year 6 SATs Week

### June

8<sup>th</sup> – 13<sup>th</sup> June

Phonics Screening Check Year  
4 Multiplication

20<sup>th</sup> June

Sports Day from 9:30am

**Executive Headteacher:** Mr Ben Crompton

**Address:** Welshampton Church of England Primary School, Welshampton, Shrewsbury SY12 0PG **Telephone:** 01948710325  
**Twitter:** @WelshamptonSch **Email:** admin@welshampton.shropshire.sch.uk **Website:** [www.welshamptonceprimary.co.uk](http://www.welshamptonceprimary.co.uk)

# Shropshire Parenting Help and Support Line

**01743 250950**

Mon - Thurs, 9.30am - 4.30pm  
Fri, 9.30am - 3.30pm

No judgment, just support.



# Understanding your child From toddler to teen

- Would you like to know more about your child's development?
- Do you need help and support to understand your child's behaviour?
- Would you like a chance to meet with other parents and carers with children of a similar age?

Join us for one of our free virtual or face-to-face groups, our next groups start:

- Understanding Your Child Group 29<sup>th</sup> April 2025 from 9.15am to 11.15am at Crowmoor Primary School, Shrewsbury
- Understanding Your Child Group 30<sup>th</sup> April 2025 from 9.00am to 11.00am at Clee Hill Community Primary School
- Understanding Your Child SEND Group 30<sup>th</sup> April 2025 from 12.30pm to 2.30pm at Shrewsbury TBA
- Understanding Your Child Group 30<sup>th</sup> April 2025 from 12.45pm to 2.45pm at Belvidere Primary School, Shrewsbury
- Understanding Your Child Group 1<sup>st</sup> May 2025 from 09.30am to 11.30am at Highley Community Primary School
- Understanding Your Child Group 1<sup>st</sup> May 2025 from 09.30am to 11.30am Virtually via MS Teams
- Understanding Your Child Group 1<sup>st</sup> May 2025 from 1.00pm to 3.00pm at St Lucia CofE Primary School, Upton Magna
- Understanding Your Child SEND Group 2<sup>nd</sup> May 2025 from 09.30am to 11.30am Virtually via MS Teams
- Understanding Your Child Group 2<sup>nd</sup> May 2025 from 1.15pm to 3.15pm at Christ Church CofE Primary School, Cressage

All our groups run for 10 weeks from the start date excluding the School Holidays.

SEND groups are for parents/carers of Children who might have special educational needs and disabilities, no formal diagnosis is needed to attend the groups.

To book a place email [Parenting.team@shropshire.gov.uk](mailto:Parenting.team@shropshire.gov.uk) or call 01743 250950

Find more free online courses at [inourplace.co.uk/shropshire](http://inourplace.co.uk/shropshire)



## Does your child struggle with their Sleep?

### Free Sleep Tight Groups

Join us on one of our virtual or face-to-face groups which run for 5 weeks and:

- Find out why sleep is important for our health and emotional wellbeing
- Get support to help improve sleep and bedtime routines
- Meet other parents/carers to share and discuss experiences

Our next groups start:

**Sleep Tight SEND Monday 9<sup>th</sup> June 2025 from 12.45pm to 2.45pm**  
Virtually Via MS Teams

or

**Sleep Tight Monday 16<sup>th</sup> June 2025 from 9.15am to 11.15am**  
Virtually via MS Teams

*SEND groups are for parents/carers of children who might have special educational needs and disabilities, no formal diagnosis is needed to attend the groups.*

To book a place email [Parenting.team@shropshire.gov.uk](mailto:Parenting.team@shropshire.gov.uk) or call 01743 250950

