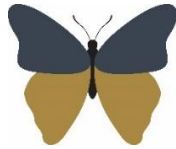


# Welshampton Church of England Primary School



**Growing together  
in strength, love and wisdom, we shine.**

**Newsletter  
Friday 7<sup>th</sup> February 2025**

---

## Message from the Head

As we look forward to Spring arriving, we are looking to further improve and enhance our school environment at Welshampton.

Mr Reincke has already been busy removing the PVC glazing of the EYFS outdoor space as part of an ongoing commitment to improve the area. Work will continue on this area over the coming weeks and we will keep you posted on how it's looking.

We are also looking to invest in our playground area, so as to give the children more opportunity for play and adventure. Please speak to your children and share with the school with any ideas that you think would be improve this area of our school.

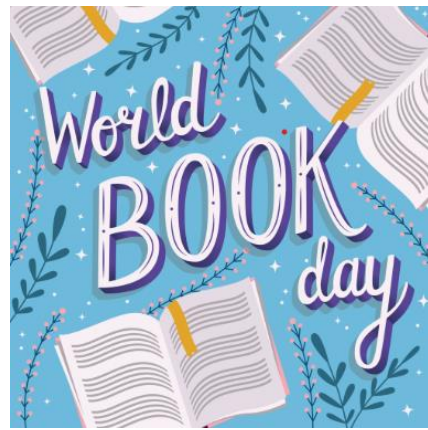
Mr Reincke has also been busy over in our school garden which he has cleared ready for a re-design and spruce up which all ties in with the 'Field Spring Clean' which is being organised by our fabulous Friends.



**Executive Headteacher:** Mr Ben Crompton

**Address:** Welshampton Church of England Primary School, Welshampton, Shrewsbury SY12 0PG **Telephone:** 01948710325  
**Twitter:** @WelshamptonSch **Email:** admin@welshampton.shropshire.sch.uk **Website:** [www.welshamptonceprimary.co.uk](http://www.welshamptonceprimary.co.uk)

## World Book Day



We will be celebrating World Book Day this year on Thursday 6<sup>th</sup> March and children are invited to come to school dressed as their favourite character.

More details to follow...

## Sunrise Breakfast Club

After half term, Sunrise Breakfast Club provision is being extended so it is available from 7:30am.

Costs will be as follows:

- 7:30am – 8:45am (£5)
- 7:45am – 8:45am (£4)

Please be advised that children arriving after 8:30am will not be entitled to breakfast due to the limited timeframe before the start of the school day.

## Accelerated Reader Impact

As you are aware we have introduced the Accelerated Reader programme to Welshampton children. I am pleased to report that it is already having a positive impact and children are making good progress.

This shows how important it is for children to be reading at a level they can access rather than trying to read books which overstretch them.

Reading really does underpin a child's learning and understanding so please keep reading with your children at home.

## School Trip, Visit and Activity Payments

At Welshampton we aim to broaden the horizons of the children and try and plan the most inspirational and educational experiences we can for the children. As always, there is a cost of these experiences, and they are subsidised by the main school budget. As you are no doubt aware, school budgets are extremely

stretched and we are always exploring different ways to find money to support the children's education.

To enable this, we often ask for parental contributions for those experiences which are beyond the standard school curriculum offer - school trips, visits and activities. To make these experiences possible, we request a 'voluntary contribution' from parents. However, whilst indeed being 'voluntary' unless we receive enough contributions, in the future we will no longer be able to run them.

The school is losing a substantial amount of money, beyond the amount which is put aside to subsidise such activities, and the reality is that it is not sustainable in the long term.

Therefore, we request that if at all possible, you support school with these contributions – even if payments are made in part - they genuinely make them possible.

We also understand that finances are really tight for a lot of families and therefore if you would ever like to discuss this further, please feel free to make an appointment with myself.

### 2025/2026 School Dates

#### Autumn Term 1

3<sup>rd</sup> September – Friday 24<sup>th</sup> October

#### Autumn Term 2

Tuesday 4<sup>th</sup> November – Friday 19<sup>th</sup> December

#### Spring Term 1

Tuesday 6<sup>th</sup> January – Friday 13<sup>th</sup> February

#### Spring Term 2

Monday 23<sup>rd</sup> February – Friday 27<sup>th</sup> March

#### Summer Term 1

Monday 13<sup>th</sup> April – Friday 22<sup>nd</sup> May

#### Summer Term 2

Monday 1<sup>st</sup> June – Friday 17<sup>th</sup> July

#### PD Days – Children Not In

Monday 1<sup>st</sup> September

Tuesday 2<sup>nd</sup> September

Monday 3<sup>rd</sup> November

Monday 5<sup>th</sup> January

Monday 20<sup>th</sup> July

**Executive Headteacher:** Mr Ben Crompton

**Address:** Welshampton Church of England Primary School, Welshampton, Shrewsbury SY12 0PG **Telephone:** 01948710325

**Twitter:** @WelshamptonSch **Email:** admin@welshampton.shropshire.sch.uk **Website:** [www.welshamptonceprimary.co.uk](http://www.welshamptonceprimary.co.uk)



#### Attend Today, Achieve Tomorrow...

Willow Class - 99% ★★★★★

Beech Class - 99% ★★★★★

Oak Class - 98% ★★★★★

Weekly average: 98.75%



If you need with getting your child into school, please contact Mrs Hordern, our Pastoral Lead. Thank you.

## Shining Stars of the Week

### Willow Class

Reid for settling into  
Nursery and Welshampton so well

### Beech Class

Sophia for working so hard on her handwriting.

### Oak Class

Dyllon for just being amazing 100% of the time.

### Outside Achievements

Tate on gaining star of the session in martial arts

Bridgette on gaining a medal in gymnastics

Theo and Jack on gaining several swimming medals in  
Oswestry Otters Club Championships 2024

Have a wonderful weekend!

Your sincerely,  
Mr Crompton.

## Key School Dates

### March

13<sup>th</sup> – 14<sup>th</sup> March

28<sup>th</sup> March

### April

2<sup>nd</sup> April

11<sup>th</sup> April

### May

12<sup>th</sup> – 15<sup>th</sup> May

### June

8<sup>th</sup> – 13<sup>th</sup> June

20<sup>th</sup> June

Year 3 & 4 Residential Trip  
Condover  
Mother's Day Service  
2:15pm  
All Welcome

Year 6 London Trip  
Easter Service  
9:15am at church  
Parents welcome

Year 6 SATs Week

Phonics Screening Check Year  
4 Multiplication

Sports Day from 9:30am



**Executive Headteacher:** Mr Ben Crompton

**Address:** Welshampton Church of England Primary School, Welshampton, Shrewsbury SY12 0PG **Telephone:** 01948710325  
**Twitter:** @WelshamptonSch **Email:** admin@welshampton.shropshire.sch.uk **Website:** [www.welshamptonceprimary.co.uk](http://www.welshamptonceprimary.co.uk)