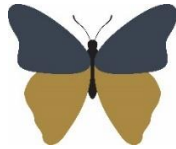


Welshampton Church of England Primary School



**Growing together
in strength, love and wisdom,
we shine.**

**Newsletter
Friday 5th January 2024**

Message from the Head

Happy New Year to you all! I hope that you had a lovely Christmas break with friends and family.

Our Christmas performances before the break were truly magical. Seeing the children shine on stage, filled with confidence and joy, was wonderful to see and I am sure you shared my pride in them all.

Nursery Now Open

The school is now able to offer nursery provision for children from the age of three. If you know of any families who would be interested in joining us, please do ask them to get in touch and come for a visit.

We warmly welcome Miss Lauren Edge to the school as a teaching assistant who will work alongside Ms Evans and our teachers as part of our EYFS team.

Over the coming months the school will be completing works in order to make best use of the demountable building adjacent to the playground. The current plans are to house our new nursery children within the school and to use the demountable building for the wider school.

Staffing Update

As you are already aware, Mrs Peile left the school at Christmas following a period of illness during the autumn term. We wish Mrs Peile all the very best for the future and thank her for all her hard work at Welshampton over several years.

Miss Hannaby will continue to job share with Ms Truswell as she has done since October. Miss Hannaby

will lead the class on a Monday, Tuesday and Wednesday, with Ms Truswell completing the week on a Thursday and Friday.

We have also said 'see you soon' to Mrs Richardson who has taken the difficult decision to have a year away from school due to family illness.

Sunset Club Timetable

The themes for this term are as follows:

Day of the Week	Club
Monday	Muddy Monday
Tuesday	Board Games
Wednesday	Art & Craft
Thursday	Young Engineers
Friday	Chill Out/Sports – Try Something New

PE Kits

A reminder that school PE kits are to be worn on the children's PE days. All children were gifted their first PE kit at the start of the year but if you require additional kit, it is available to purchase from School Shop along with all other school uniform.

If, for any reason, children are unable to wear their PE kit, they should instead wear school uniform to school.

Weekly Attendance

Willow - 94%
Beech - 95%
Oak - 95%

Our school target is 97%.

Non-School Uniform Day

Peacock House children are invited to come to school next Friday in their own clothes as reward for being House Point Champions last term.

Have a wonderful weekend!
Yours sincerely, Mr Ben Crompton

Key Dates

9 th February	Break up
19 th February	Return to school
22 nd March	Break up
8 th April	Return to school

Executive Headteacher: Mr Ben Crompton

Address: Welshampton Church of England Primary School, Welshampton, Shrewsbury SY12 0PG **Telephone:** 01948710325
Twitter: @WelshamptonSch **Email:** admin@welshampton.shropshire.sch.uk **Website:** www.welshamptonceprimary.co.uk