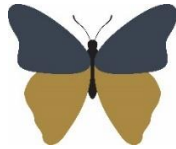


Welshampton Church of England Primary School



**Growing together
in strength, love and wisdom,
we shine.**

**Newsletter
Monday 27th November 2023**

Message from the Head

We are looking forward to welcoming parents to school this week for our Autumn Parents Evening. It is an opportunity for teachers to share with parents both areas of strength but also any areas where we feel they may require additional support.

We hope that you find it informative, useful and that you have enough time to have any questions answered. If, however, you don't have enough time, please get in touch via Class Dojo or the school office to arrange an additional meeting. Many thanks.

Ain't No Party Like A Christmas Party!



Executive Headteacher: Mr Ben Crompton

Address: Welshampton Church of England Primary School, Welshampton, Shrewsbury SY12 0PG **Telephone:** 01948710325
Twitter: @WelshamptonSch **Email:** admin@welshampton.shropshire.sch.uk **Website:** www.welshamptonceprimary.co.uk

Winter Weather and School Closures

As we approach the winter season, we understand that there is always a possibility of inclement weather that could impact the school's ability to open safely. While we strive to keep the school open whenever possible, the safety of our children and staff remains our top priority.

When making the decision to open or close the school, we carefully consider various factors, including:

- **Weather forecasts:** We closely monitor weather forecasts from reputable sources to assess the severity and timing of any potential weather events.
- **Local road conditions:** We evaluate the condition of local roads to ensure safe passage for students, staff, and bus drivers.
- **Staff travel distances:** We consider the distance that our staff members travel to and from school, ensuring that they can safely commute in adverse weather conditions.

We recognise the disruption that school closures can cause to families' schedules and the potential impact on students' education. However, if we determine that school closure is necessary, we will promptly inform parents via email, text message, and our school's Facebook page. We will strive to make this decision as early as possible to allow families ample time to make arrangements.

Poppy Appeal

We raised a total of £72 for the poppy appeal this year. Thank you to everyone who contributed. For a school of our size, this is a great amount.

Weekly Class Dojo Points

Brimstone	234
Grayling	211
Peacock	224

Individual Class Dojo Champions

Beech Class	Bella, Freddie and Will
Oak Class	Ava and Lilly
Willow Class	Bridgette and Tom

Shining Stars of the Week

Willow Class	James for trying hard all week in his work
Beech Class	Luke Dar for his amazing writing assessment
Oak Class	Emily O for the most amazing scores in her assessments

Pen Licence

This week it's congratulations to Archie B for being granted his license!

Outside Achievements

Last week Luke P gained a medal in football tournament and Zac won a medal for his gymnastics. Very well done both!

Headteacher Award

Following Assessment Week, this goes to all of our amazing children who worked so hard all week. I was very proud of you all!

Have a great week!

Yours sincerely,
Mr Ben Crompton

Key Dates

November	
Monday 27 th	Parents Evening
Tuesday 28 th	Parents Evening
Tuesday 28 th	Beech Class Inspire Session 9am. Parents Welcome.

December

Thursday 14 th	Welshampton Friends Disco 3:30pm
Weds 13 th	Christmas Pantomime
Weds 13 th	Christmas Dinner
Tuesday 19 th	Whole School Christmas Performance 5:30pm
Weds 20 th	Whole School Christmas Service 1:00pm



Executive Headteacher: Mr Ben Crompton

Address: Welshampton Church of England Primary School, Welshampton, Shrewsbury SY12 0PG **Telephone:** 01948710325
Twitter: @WelshamptonSch **Email:** admin@welshampton.shropshire.sch.uk **Website:** www.welshamptonceprimary.co.uk