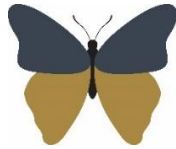


Welshampton Church of England Primary School



**Growing together
in strength, love and wisdom,
we shine.**

**Newsletter
Friday 29th September 2023**

Message from the Head



National Teaching Assistants' Day is a day when we recognise the valuable contribution Teaching Assistants make to the education and support of school children across the UK... and non more than at Welshampton.

The role Teaching Assistants play in school can often go unnoticed to the outside world but the work that is done to support children and teaching is invaluable. Often Teaching Assistants have the most challenging of roles which can have the greatest of impacts not only children's education but on their wider life.

We are very fortunate at Welshampton have a wonderful team of Teaching Assistants, and this is a great day to recognise their work. Thank you all! You shine brightly!

Forest School Seating

A huge thank you to Mr and Mrs Clay for their generous donation and delivery of benches and tree stumps for our Forest School. We will be developing this area throughout the year and the seating and campfire area is central to this environment. These seats and benches will be key to Forest School for years to come.

Harvest Festival 2023

A reminder that our Harvest Festival is taking place on Monday. We look forward to welcoming parents to the church on Monday morning at 9.15am. Thank you to everyone who has donated goods to be donated.

10K Fundraising Champs

Over the summer holidays a number of children ran in the Ellesmere 2k race but lots of them also helped Marshall the course (for both the 2k and the 10k events) and as a result raise money for the Friends of Welshampton.

We had Ava and Bella, Harry, Theo and Jack plus recent leavers Alex and Tom all in action along with a number of mums and one granny! Everyone enjoyed themselves and raised £250 for the school! A huge thanks to everyone that volunteered and helped.

We support this event every year and the school gets £30 for every Marshall so please look out next year for more information of how to get involved.

Wembley of Welshampton

To make an omelette, you have to break an egg and currently the school field is largely soil. However, it has now been levelled, with the base of our new running track installed. Over the next couple of weeks, the running track will be finished and the new – flat and level - playing field seeded. The children will be able to use the running track as soon as it is finished in PE lessons but we will have to wait until the Spring to start using the field.

It is really exciting to go over and see the diggers in action and it is already clear to see the significant improvement that has been made which will be of benefit to the children of Welshampton for decades to come.



Executive Headteacher: Mr Ben Crompton

Address: Welshampton Church of England Primary School, Welshampton, Shrewsbury SY12 0PG **Telephone:** 01948710325
Twitter: @WelshamptonSch **Email:** admin@welshampton.shropshire.sch.uk **Website:** www.welshamptonceprimary.co.uk

Fantastic Footballers



Last week we sent a team of year 5/6 girls to Oswestry School to take part in a football tournament against 7 other primary schools. In the group stages we were undefeated, winning our first two matches and drawing the third. Despite fantastic goalkeeping by Mia, we unfortunately lost our semi-final game, leaving us in fourth place. The girls showed resilience and determination and made a fantastic team. Well done!



It was our U9s who were in action on Thursday night at Newtown. This was the first Newhampton Derby of the season and Welshampton did wonderfully well, winning 6-1! There were several outstanding performances and the win was thoroughly deserved. The match was played in a fantastic spirit with no shortage of skill on show. Well done all!

After-School Club Booking

Due to the popularity of our Sunset Club, we will no longer be able to accept 'on the day' bookings. For safeguarding reasons we must stick to certain ratios dependent on staffing levels which are arranged in advance. Parents are able to book into clubs as normal using the app or via the office but we unfortunately will no longer be able to accept last minute requests.

Executive Headteacher: Mr Ben Crompton

Address: Welshampton Church of England Primary School, Welshampton, Shrewsbury SY12 0PG **Telephone:** 01948710325
Twitter: @WelshamptonSch **Email:** admin@welshampton.shropshire.sch.uk **Website:** www.welshamptonceprimary.co.uk

Attendance

Oak Class are the attendance champions this week with 97% with the school having an average attendance of 95%. Our school target is 97%.

Class Dojo Champions – The Top 3

Willow	Emily B, Maisie and Michael
Beech	Connie, Martha and Will
Oak	Archie B, Ava and Euan

Weekly House Points

Brimstone	342
Grayling	386
Peacock	341

Shining Stars of the Week

Willow	Emily B for trying so hard when things are tricky
Beech	Esme for being great during her time at Welshampton - we will miss you!
Oak	Lilly for showing great determination with her big her big write

Outside Achievements

Some high achieving 'martial artists' this week... with Archie B gaining his Green Belt, Luke Dar his Blue Belt and Jack, Theo and Harry L achieved their Red Belts.

Martha has successfully completed Piano Part 1.

Ava brought in her trophy for winning an U16 (!) tennis competition and achieving a medal for 2nd [lace in Green Ball.

Many congratulations all!

Have a wonderful weekend!

Yours sincerely,
Mr Ben Crompton

Key Dates

October

Monday 2 nd	Harvest Festival at 9.15am Parents welcome
Friday 27 th	PD Day
Monday 31 st	Half term

November

Monday 7 th	Children return to school
Monday 20 th	Assessment Week
Monday 27 th	Parents Evening
Tuesday 28 th	Parents Evening



Saturday 30th September

**Big
Green
Day**

Welshampton & Lyneal Parish Council

This special free event, organised by the Climate, Sustainability and Biodiversity Working Group, will give visitors a lively and unique insight into some of the incredible businesses and organisations taking care of this beautiful part of Shropshire supporting sustainability and biodiversity.

Big Green Raffle
In support of the Ellesmere Food
And Warm Clothes Sharing
Project

Welshampton Parish Hall

9am - 5pm

Talks throughout the day!

The Big Green Day will include over 20 exhibitors and stalls covering:

- ◇ Garden wildlife & Composting
- ◇ Meadow creation
- ◇ Renewable energy
- ◇ Fabulous local produce
- ◇ Sustainable Household Products
- ◇ Come and talk to the experts and rangers who care for Colemere
- ◇ Rural Arts Hub and hands on craft activities
- ◇ Learn more about Whixall Moss

**Ellesmere
Repair Cafe**

**Treat yourself to a
Brooklands Farm
Organic Gelato!**

**Plant and Seed
Swap**

Come and spend a couple of hours with us, we aim to inform and inspire you!

For further information please contact clerk@welshamptonandlyneal-pc.gov.uk or 01948 710672

Executive Headteacher: Mr Ben Crompton

Address: Welshampton Church of England Primary School, Welshampton, Shrewsbury SY12 0PG **Telephone:** 01948710325
Twitter: @WelshamptonSch **Email:** admin@welshampton.shropshire.sch.uk **Website:** www.welshamptonceprimary.co.uk